



مؤسسة مخزومي
Makhzoumi Foundation

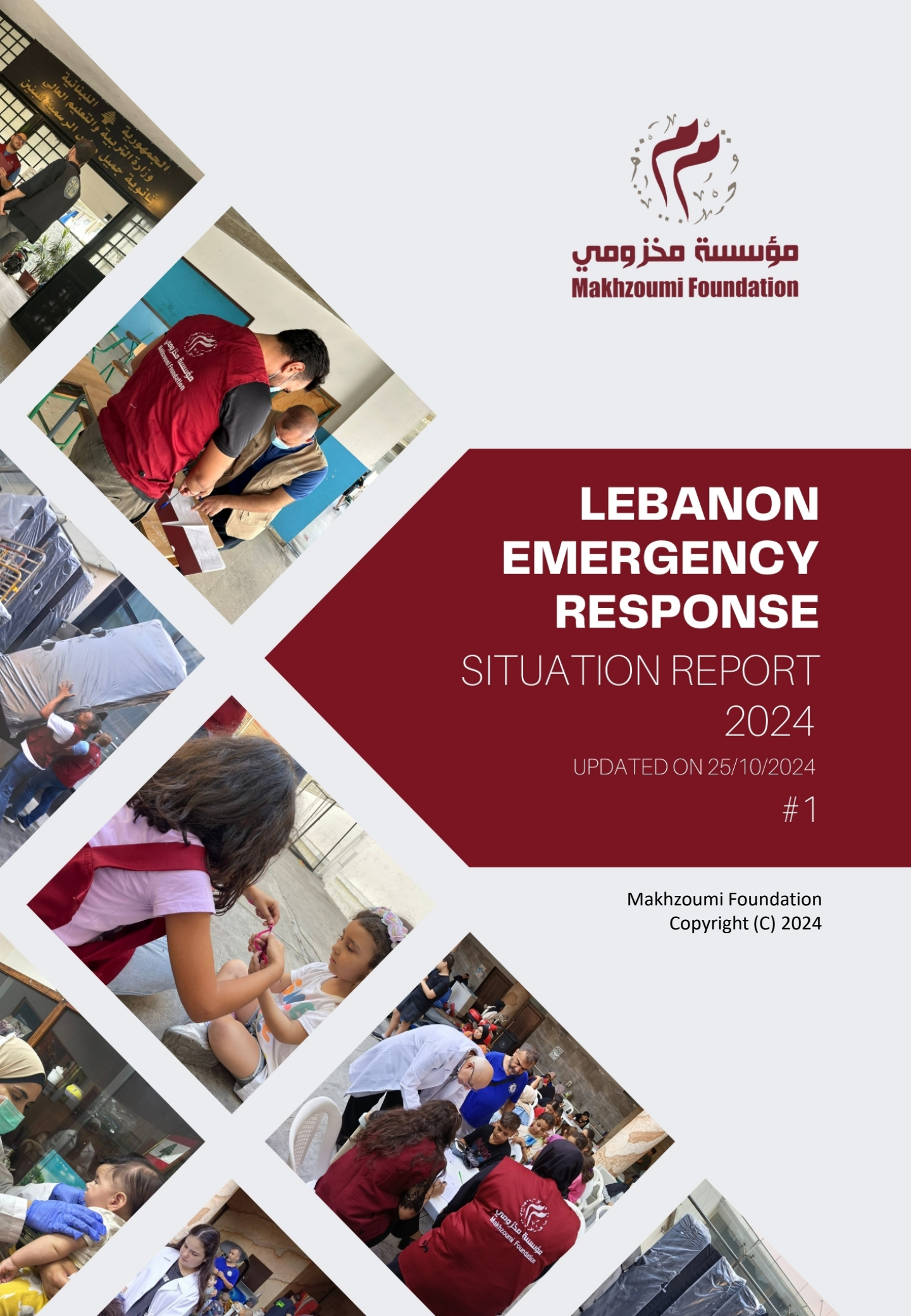
LEBANON EMERGENCY RESPONSE

SITUATION REPORT 2024

UPDATED ON 25/10/2024

#1

Makhzoumi Foundation
Copyright (C) 2024



LEBANON SITUATION AT A GLANCE

The humanitarian crisis in Lebanon is worsening by the day, as the ongoing conflict intensifies. Since the start of hostilities on 23 September 2024, air strikes have expanded, targeting civilian infrastructure and densely populated areas. The death toll has surged by over 200%, with **2,483** people reported dead as of 21 October 2024. Over **11,628** individuals have been injured, as the health system suffers relentless attacks. The displacement crisis is also escalating, with over **1.2 million** internally displaced persons (IDPs) recorded by the International Organization for Migration (IOM). As **1,094** shelters struggle to accommodate people from all Lebanon, the need for urgent humanitarian intervention is becoming increasingly critical.



2,672

Deaths



12,468

Injured



1,094

Shelters



+1.2 Million

IDPs



284,894

Left Lebanon



OUR MOBILIZATION & RESPONSE

In Times of Need: Together We Stand, Together We Serve.

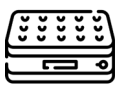
From the first day of the crisis, Makhzoumi Foundation was at the frontlines. Significant efforts were made by the teams and volunteers to provide essential relief to displaced families across shelters. The emergency response, in collaboration with local and international partners including the Primary Healthcare Network at the Ministry of Public Health, the Disaster Risk Management Unit, and UNHCR, focused on distributing critical supplies such as mattresses, blankets, kitchen sets, and solar lamps to address the immediate needs of the affected population. More than **15,349** mattresses and **28,198** blankets were distributed. These items aimed to provide displaced families with essential bedding and warmth during their displacement. Kitchen sets were provided, and **245** solar lamps were distributed to assist families with lighting needs in areas with limited or no access to electricity. More non-food items distributions of water gallons, hygiene kits, dignity kits, bread and meals took place. **1620** children joined Psychosocial Support (PSS) activities and **7,500** medical services through the primary healthcare center and the mobile medical unit (MMU) were part of the interventions. The distributions were conducted with the support of volunteers from the Step Forward initiative. The response targeted more than **239** shelters, ensuring aid reached as many displaced families as could be. This emergency response underscores the commitment to meeting the immediate needs of vulnerable populations, providing essential items to enhance living conditions and support daily survival amid displacement.

OUR WORKS BY NUMBERS



44585

Total
Services



15349

Mattresses



28,198

Blankets



550

Water
Gallons



1505

Hot
Meals



239

Shelters
Visited



5,625

Families
Served



138

PSS
sessions



524

Hygiene
Kits



335

Dignity
Kits



245

Solar
Lamps



7,500

Health
Services



25

MMU
Campaigns



1620

Children
PSS

MORE THAN 239 SHELTERS, ONE MISSION

Makhzoumi Foundation's Lifeline for Displaced Families

As of the date of this report, Makhzoumi Foundation has reached over **239** shelters across Beirut, Mount Lebanon, and Tripoli, including schools, universities, and other temporary housing locations. Among these, five main schools have been assigned to the Foundation for full responsibility. The situation in these shelters is terrible, with overcrowded conditions, scarce resources, and families struggling to maintain a sense of normality. The Foundation's teams and Stepforward volunteers have become the hope, tirelessly working to provide essential support through delivering supplies, offering medical care, and organizing psychosocial activities for children. Their presence is a vital source of comfort and dignity for those who are displaced, ensuring that families do not feel forgotten in their time of need.

Through dedication and compassion, Makhzoumi Foundation continues to stand by these communities, committed to alleviating their suffering and offering the help they so desperately need.

Five key schools have been placed under the full responsibility of the Foundation.



**Al Amir Shakib Arslan Mixed School
Burj Abi Haidar Official Kindergarten
Ras Al Nabaa 2 Girls School
Al Basta First Mixed Official School
Al Amir Shakib Arslan Mixed School**



BRINGING ESSENTIAL NEEDS TO SHELTERS Makhzoumi Foundation's Distributions

Makhzoumi Foundation, with the support of key partners like UNHCR and the Disaster Risk Management Unit, has been tirelessly working to meet the urgent needs of displaced families through well-organized distribution services in shelters across Beirut and Mount Lebanon. Essential items such as mattresses, blankets, hygiene kits, and dignity kits have been distributed according to the specific needs of each shelter. Understanding the critical importance of tailoring distributions to these needs, the team at Makhzoumi Foundation carefully organizes schedules to ensure that aid reaches those who need it most, when they need it most. To maintain transparency and coordination, all distributions are reported through Activity Info and other national channels. This open communication ensures that the efforts are aligned with national relief plans, maximizing impact and efficiency during this challenging time.

Warmth in Crisis: Essential Aid for Displaced Families

Amid the escalating humanitarian crisis in Lebanon, Makhzoumi Foundation, with the vital support of UNHCR, is addressing the urgent need for basic supplies like mattresses and blankets.

As winter appears and shelters become more overcrowded, these distributions are a lifeline for displaced families facing harsh conditions.

Beyond comfort, these essential items provide critical protection from the cold, helping prevent illness and offering a sense of dignity and safety. With thousands of mattresses and blankets already distributed, this effort is a key step in alleviating the hardships experienced by vulnerable communities during these difficult times.



BRINGING HEALTHCARE TO SHELTERS

Makhzoumi Foundation's PHCC & MMU

During the current crisis, the Primary Healthcare Center (PHCC) and the Mobile Medical Unit (MMU) of Makhzoumi Foundation played an important role in providing essential healthcare services to displaced families in shelters across Lebanon. With a dedicated team of doctors, nurses, logistics, and other healthcare professionals, the PHCC offers medical consultations, laboratory tests, radiology, routine vaccination and medications. The MMU conducts comprehensive medical checkups, including screenings for non-communicable diseases (NCDs) such as diabetes and hypertension. Special attention is given to older individuals, ensuring they receive the necessary care for chronic conditions. In addition to on-site treatment, the MMU refers patients in need of further medical attention to the PHCC. As of this report's date, the PHCC and the MMU served around **7,500** individuals. These visits reinforce the Foundation's commitment to addressing their healthcare needs during this crisis.

Health in Crisis: Essential Aid for Displaced Families

During this ongoing crisis, the MMU of Makhzoumi Foundation has been a lifeline for displaced families seeking essential healthcare in shelters. Visiting collective shelters in Beirut and Mount Lebanon, the MMU has provided medical services where most needed. For many, the MMU is their only access to healthcare amidst the chaos. Despite these challenges, our dedicated team of doctors and nurses continues to deliver care with compassion, offering medical support and hope. Hygiene and dignity kits have also been distributed to help maintain basic hygiene standards. The MMU's interventions are important, but the need remains immense as we strive to ensure that no one is left behind in this humanitarian emergency.

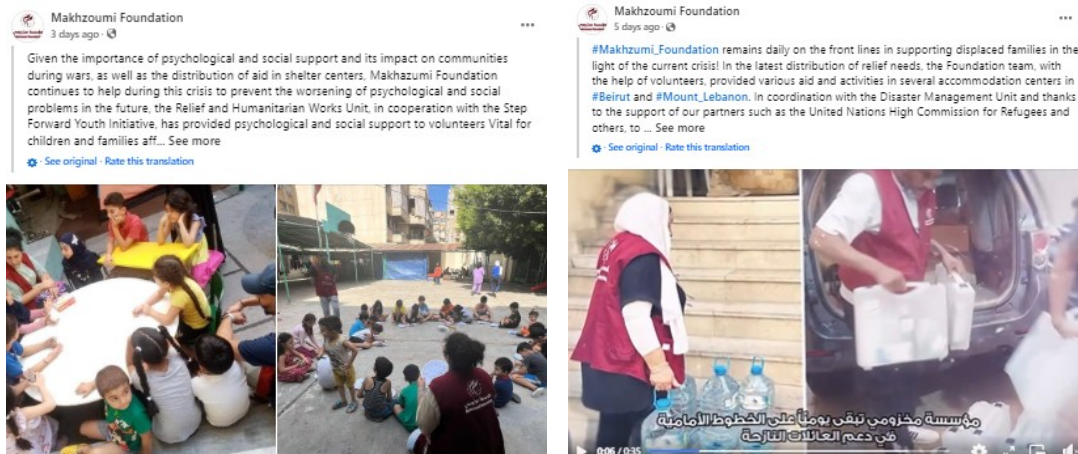


BRINGING CRISIS INTO FOCUS

Help us to help others



During this ongoing crisis, Makhzoumi Foundation is actively sharing updates on all its humanitarian interventions across social media, showcasing efforts to support displaced families. The Foundation is also calling on volunteers through the Stepforward initiative to join in making a meaningful impact during these challenging times. In addition, the Foundation has launched a donation campaign to support families. Collecting donations provides essential items such as basic needs, food, hygiene kits, medical supplies, and others, ensuring these families have the necessities to survive. The donation page on Makhzoumi Foundation website on this link <https://makhzoumi-foundation.org/donate/> is secured to collect all kinds of aids received inside and outside Lebanon.



A CONTINUOUS CALL FOR SUPPORT TOGETHER WE BEGAN, UNITED FOREVER WE STAND

As we continue to respond to the growing humanitarian needs resulting from the current crisis, the call for Step Forward Initiative volunteers and donation support is more urgent than ever. The immense scale of displacement, damage to infrastructure, and the pressing need for medical and basic supplies require the efforts of both individuals and organizations alike. Makhzoumi Foundation encourages everyone who can contribute to join us, whether by volunteering or amplifying our efforts. Together, we can bring relief to those affected and ensure that their voices are heard in this time of need. Your support can make a real difference in the lives of thousands.

Makhzoumi Foundation extends its appreciations and gratitude to all its dedicated staff and volunteers for their remarkable efforts during this challenging crisis. Their commitment, resilience, and hard work bring relief to countless displaced families.



Additional Links: <https://makhzoumi-foundation.org/>
<https://www.facebook.com/makhzoumi.foundation/>
<https://twitter.com/makhzoumi>
https://www.instagram.com/makhzoumi_foundation/
<https://www.youtube.com/user/makhzoumifoundation>

For more details, please contact:
Makhzoumi Foundation Headquarter in Beirut, Lebanon
info@makhzoumifoundation.org
++961-1-660890